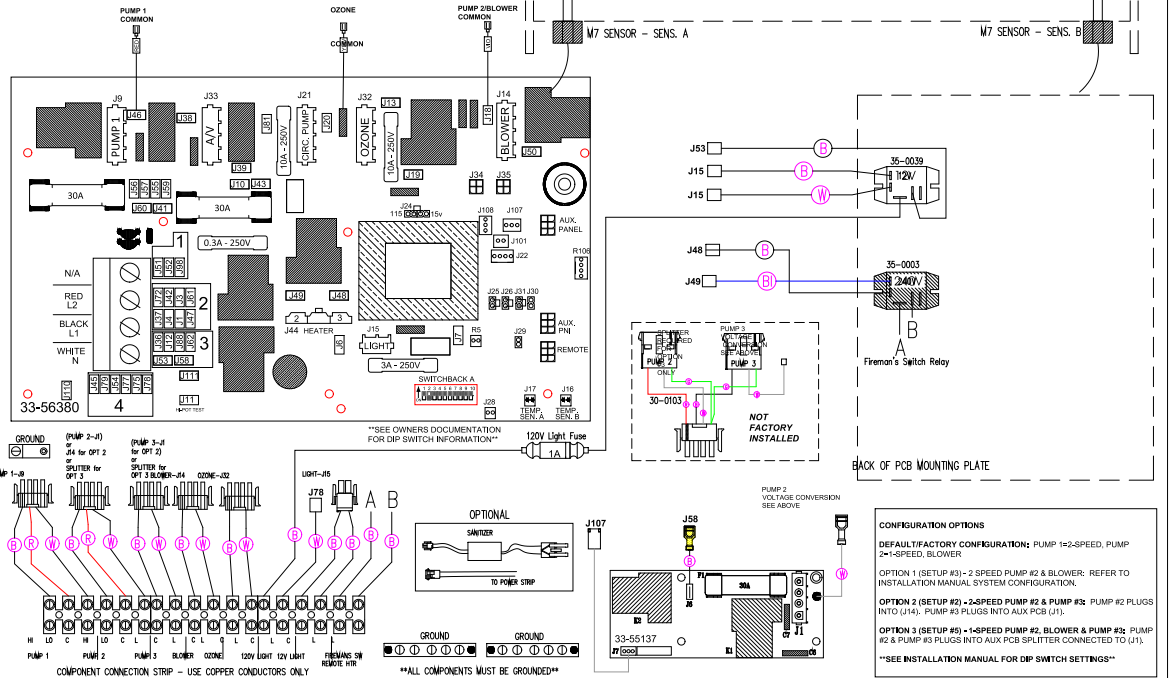


TO CONVERT CIRCUIT 120 OR 240V MOVE WHITE WIRE ACCORDINGLY
 120V COMPONENT = OPEN POSITION AT CONNECTION BLOCK #4
 240V COMPONENT = OPEN POSITION AT CONNECTION BLOCK #2

13-0014A-M7 - Gas Housing



CONFIGURATION OPTIONS

DEFAULT FACTORY CONFIGURATION: PUMP 1=2-SPEED, PUMP 2=1-SPEED, BLOWER

OPTION 1 (SETUP #3) - 2 SPEED PUMP #2 & BLOWER: REFER TO INSTALLATION MANUAL SYSTEM CONFIGURATION.

OPTION 2 (SETUP #2) - 2-SPEED PUMP #2 & PUMP #3: PUMP #2 PLUGS INTO J14, PUMP #3 PLUGS INTO AUX PCB J11.

OPTION 3 (SETUP #5) - 1-SPEED PUMP #2, BLOWER & PUMP #3: PUMP #2 & PUMP #3 PLUGS INTO AUX PCB SPLITTER CONNECTED TO J11.

SEE INSTALLATION MANUAL FOR DIP SWITCH SETTINGS

HYDR-O-QUIP
 CORONA, GA (951) 275-7575

Manufacture Notes:

Dwg. No. **G822A0-KLPQY-J**

Drawn	MO	Rev	04
Date	08.25.16		
Diagram No.	5183		

Wire Color Code

B - Black	G - Green
Br - Brown	Bl - Blue
R - Red	Y - Violet
O - Orange	W - White
Y - Yellow	Gr - Gray

DEFAULT SYSTEM SETUP: #18 - REFER TO INSTALLATION MANUAL