

High-Limit LED must be installed as shown (lower 4 pins)

12V Light (White 2-Pin)

SYSTEM FUSE

RED INDICATOR LIGHT

HIGH-LIMIT

RED INDICATOR LIGHT

PUMP 1 FUSE

RED INDICATOR LIGHT

PUMP 2 FUSE

RED INDICATOR LIGHT

AIR/CIRC/OZ FUSE

RED INDICATOR LIGHT

PUMP 3 FUSE

RED INDICATOR LIGHT

ON

OFF

P101

P51

P31

P34

P90

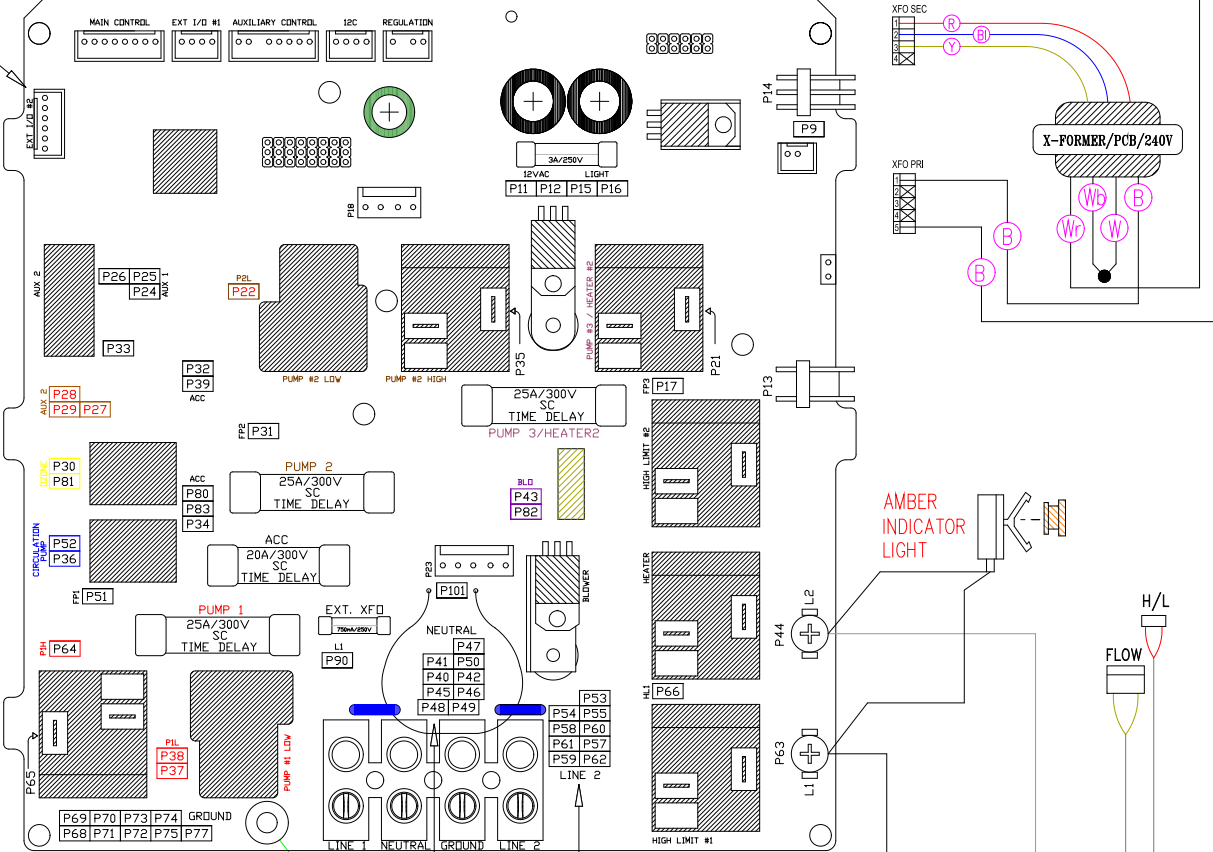
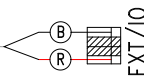
P17

33-0025-R7

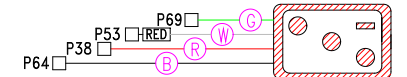
Connect to open Neutral connector

CUSTOMER INSTALLED JUMPER FOR 50Hz EXPORT ONLY!

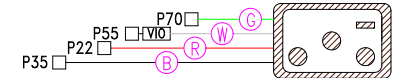
Connect to open Line 2 connector



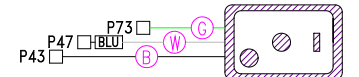
Pump 1 (RED Receptacle)



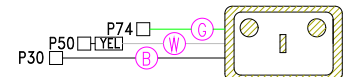
Pump 2 (BROWN Receptacle)



Air Blower (PURPLE Receptacle)



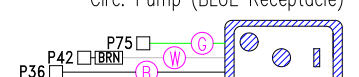
Ozone (YELLOW Receptacle)



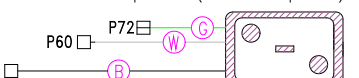
Hot Acc. Receptacle (Green)



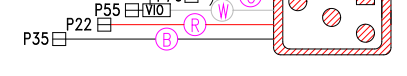
Circ. Pump (BLUE Receptacle)



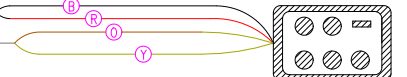
Pump 3 - (PINK Receptacle)



Pump 2 - 50Hz (RED Receptacle)



Heater 6-Pin (BLACK Receptacle)



Heater 3-Pin (BLACK Receptacle)



HYDRO-QUIP
CORONA, CA (909) 273-7575

Manufacture Notes: EX: RED - DENOTES THE COLOR OF HEAT SHRINK USED.

A 50Hz jumper has been provided for quick conversion to 3-Wire, 240V for export models. Connecting this plug will result in the PCB Neutral becoming L2 (or Common). Hydro-Quip will not be held responsible for domestic mis-wire as a result of this connection.

Drawn	Rev
BH	0
Date	09.01.06
Diagram No.	4430

Wire Color Code	
B - Black	G - Green
Br - Brown	Bl - Blue
R - Red	V - Violet
O - Orange	W - White
Y - Yellow	Gr - Gray