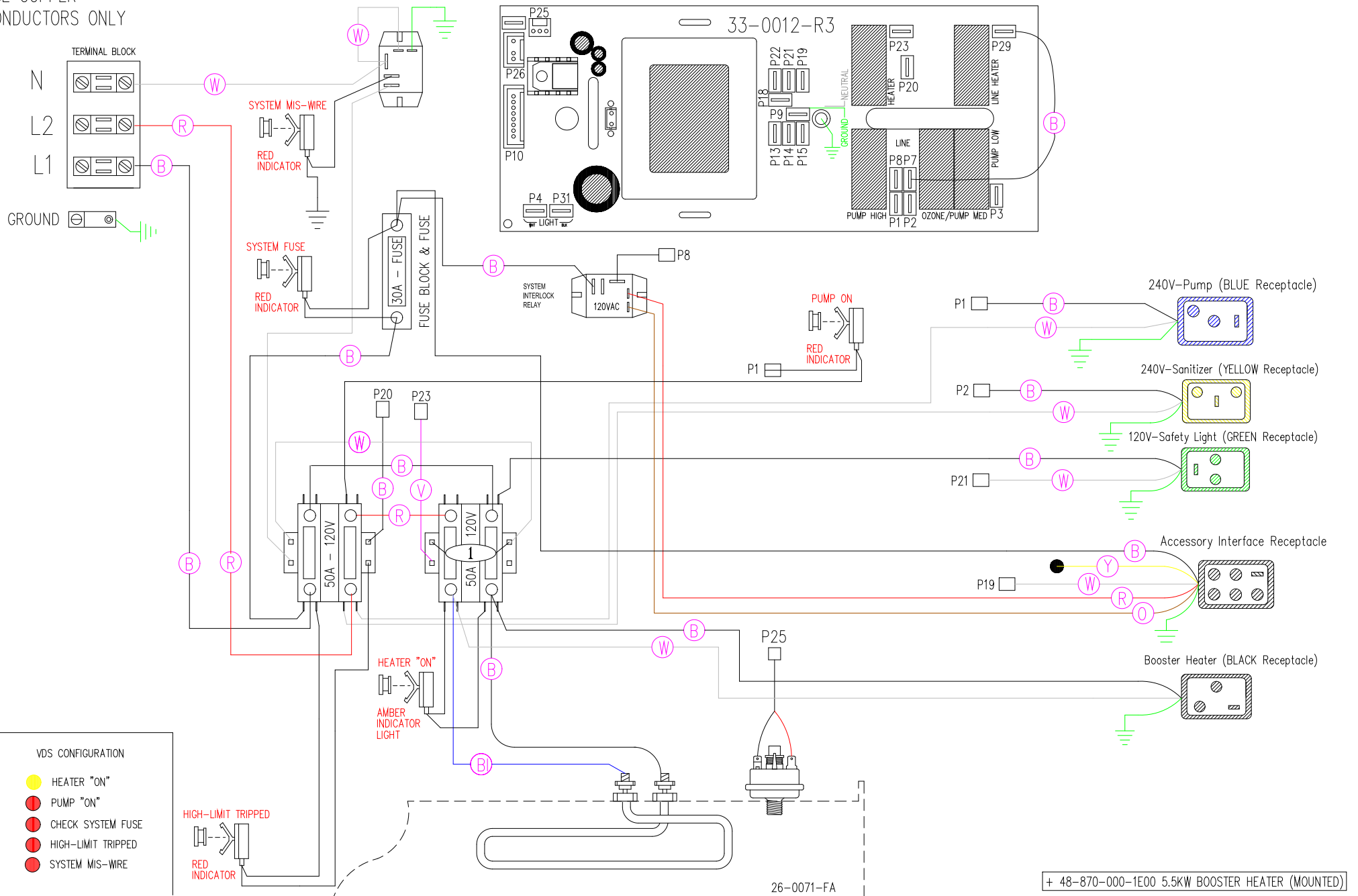


USE COPPER
CONDUCTORS ONLY



VDS CONFIGURATION

- HEATER "ON"
- PUMP "ON"
- CHECK SYSTEM FUSE
- HIGH-LIMIT TRIPPED
- SYSTEM MIS-WIRE

HIGH-LIMIT TRIPPED
RED INDICATOR

HEATER "ON"
AMBER INDICATOR LIGHT

PUMP ON
RED INDICATOR

SYSTEM MIS-WIRE
RED INDICATOR

SYSTEM FUSE
RED INDICATOR

+ 48-870-000-1E00 5.5KW BOOSTER HEATER (MOUNTED)

Manufacture Notes:

Dwg. No. 10000-HKQTY-J	Drawn MBS	Rev 02	Wire Color Code	
Date 09.22.16	Diagram No. 2041	B - Black G - Green Br - Brown Bl - Blue R - Red V - Violet O - Orange W - White Y - Yellow Gr - Gray		