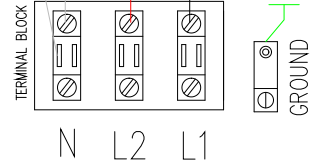


DEFAULT PUMP & SANITIZER VOLTAGE IS 120V

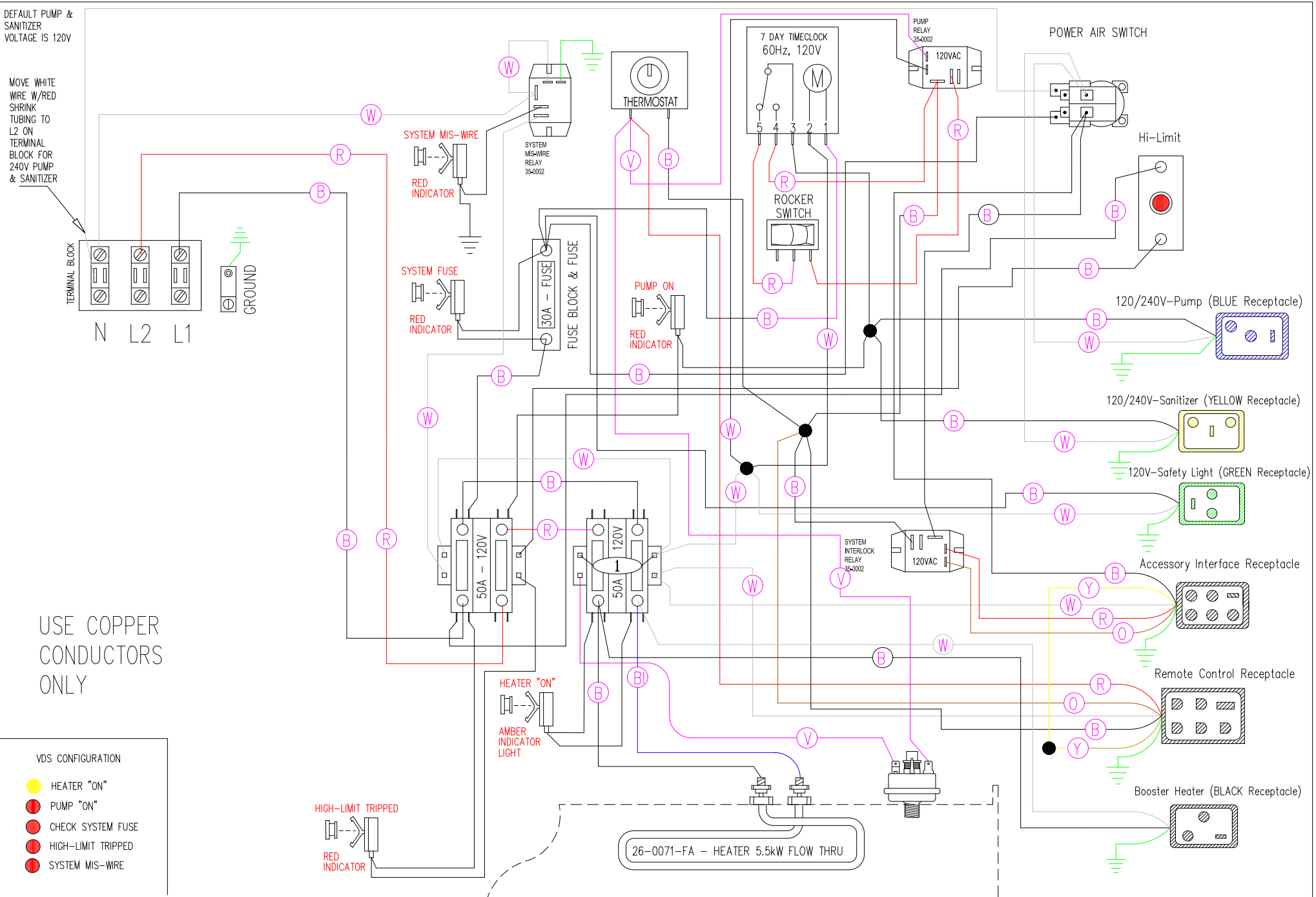
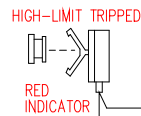
MOVE WHITE WIRE W/RED SHRINK TUBING TO L2 ON TERMINAL BLOCK FOR 240V PUMP & SANITIZER



USE COPPER CONDUCTORS ONLY

VDS CONFIGURATION

- HEATER "ON"
- PUMP "ON"
- CHECK SYSTEM FUSE
- HIGH-LIMIT TRIPPED
- SYSTEM MIS-WIRE



Manufacture Notes:

Dwg. No. 10000-HKQTY-J	Drawn MBS	Rev 01	Wire Color Code
Date 10.06.15	Diagram No. 2038		B - Black Br - Brown R - Red O - Orange Y - Yellow G - Green Bl - Blue V - Violet W - White Gr - Gray