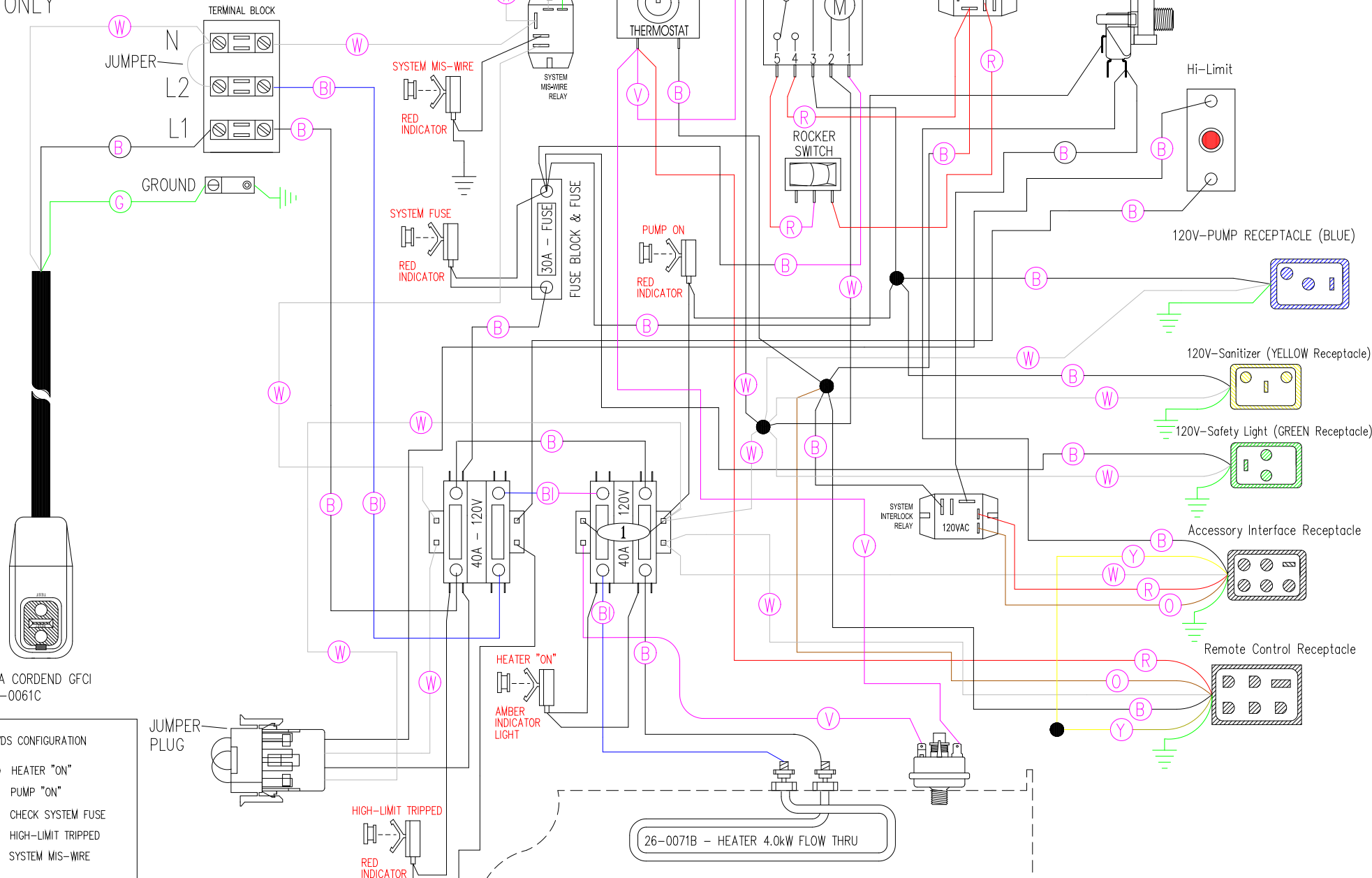
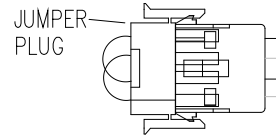


USE COPPER CONDUCTORS ONLY



15A CORDEND GFCI
30-0061C

- VDS CONFIGURATION
- HEATER "ON"
 - PUMP "ON"
 - CHECK SYSTEM FUSE
 - HIGH-LIMIT TRIPPED
 - SYSTEM MIS-WIRE



26-0071B - HEATER 4.0kW FLOW THRU

Manufacture Notes:

Dwg. No. 10000-HKQTY-J	Drawn MBS	Rev 03	Wire Color Code
Date 07.22.13	Diagram No. 2016_SPL		B - Black Br - Brown R - Red O - Orange Y - Yellow G - Green Bl - Blue V - Violet W - White Gr - Gray